



Gatewing X100

REVOLUTIONARY MAPPING



REVOLUTIONARY MAPPING

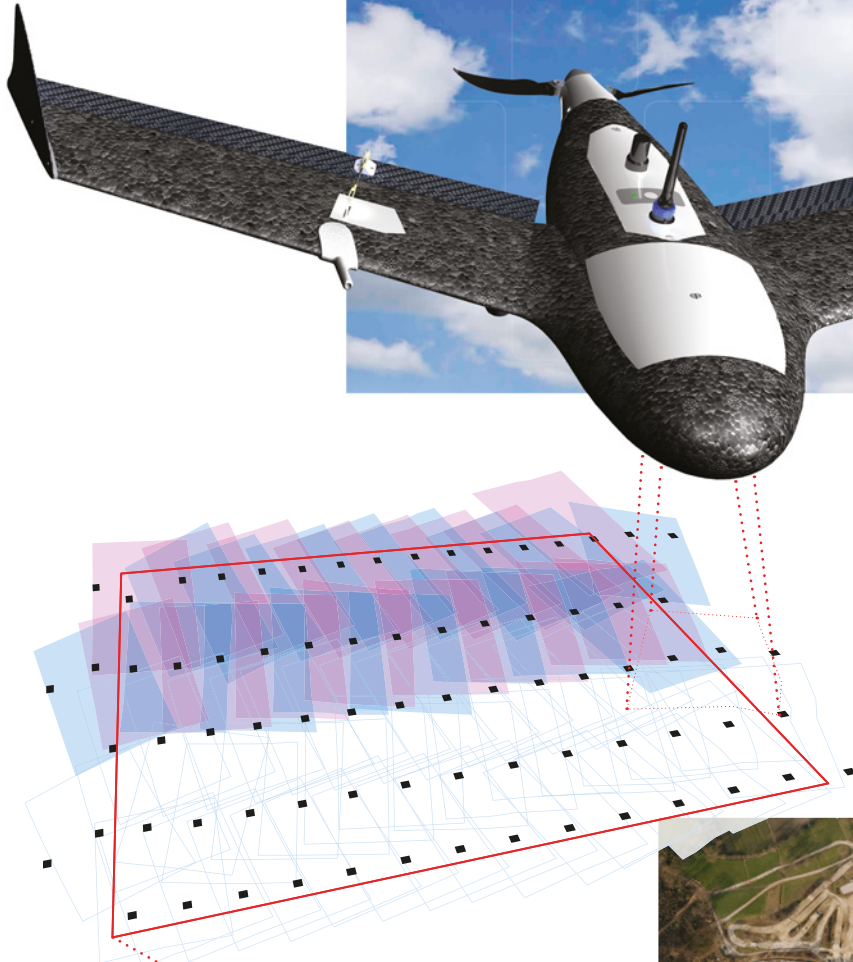
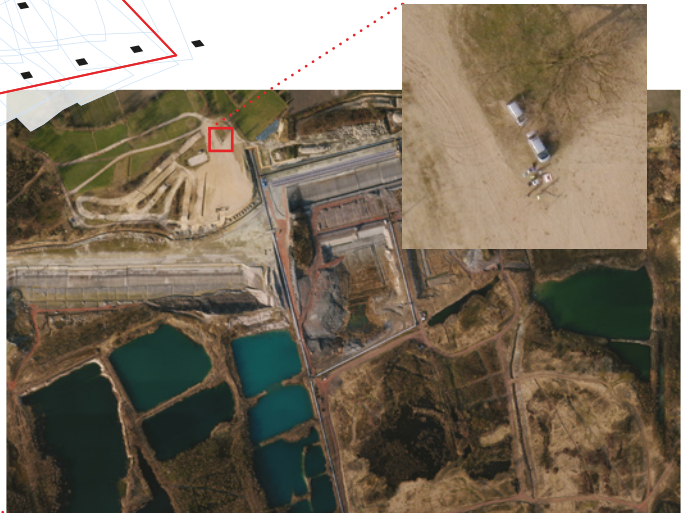


IMAGE ACQUISITION

A fully automated aerial scan collects raw digital images from between 100 to 750 meters altitude. These GPS positioned images have very high overlap.

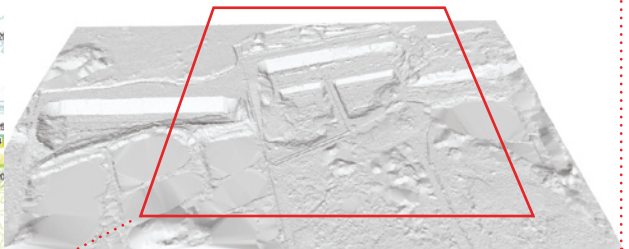
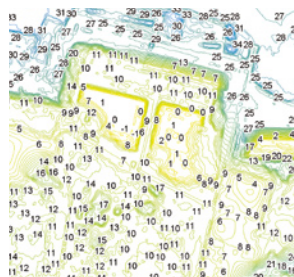


HIGH RESOLUTION ORTHOPHOTOS

The raw images are digitally processed into the highest quality orthophotos. These aerial photo maps are geo-referenced.

ACCURATE DIGITAL TERRAIN MODELS

As a valuable addition precise topographic terrain models can be derived.



© GATEWING

GATEWING TERRAIN MAPPING

Our new method for digital terrain mapping allows you to provide your own remote sensing imagery. Make your own recent and high quality images whenever and wherever you need to.

The X100 revolutionizes the way we map!

APPLICATIONS

- Vegetation monitoring in combined visual and NIR spectrum for precision farming and forest preservation
- Topographic surveying as a valuable alternative for LIDAR and add-on to terrestrial measurements
- Infrastructure mapping for land management and planning, visualization and follow-up of projects
- Other applications? Please share your ideas with us! – sales@gatewing.com



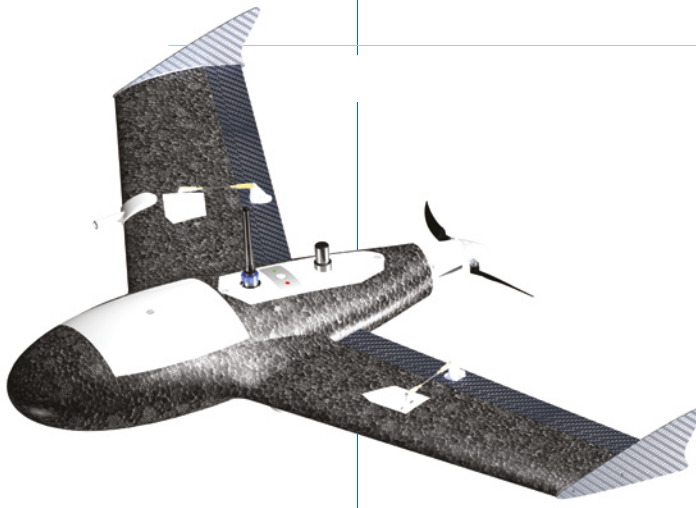
SOME DETAILS

CATEGORY	ITEM	VALUE
Operation	System setup time	15 minutes
	Flight altitude (AGL)	100 - 750 m
	Default flight altitude (5 cm resolution)	150 m
	Overlap	variable, 75% default forward & side
	Average coverage per flight (30 min at 150 m)	1,5 km ²
	Average number of pictures per km ² (at 150 m)	600
	Weather	up to 65 km/h wind & light rain
Orthophoto	Pixel resolution (GSD)	5 cm (at default altitude)
	Planimetric accuracy	equal to 1 pixel (5cm)
	Projection	semi-true or true
	Colour	true RGB; no haze
DTM	Point spacing	25 - 200 cm
	Planimetric accuracy (XY plane)	5 cm (at default altitude)
	Height accuracy (Z axis)	10 cm (at default altitude)



DATA SHEET X100

CATEGORY	ITEM	VALUE
Wing	Type	Lifting body, fixed wing
	Weight	2.0 kg
	Wingspan	100 cm
	Wing area	23 dm ²
	Dimensions	100 x 60 x 10 cm
	Material	Carbon reinforced EPP structure
Configuration	Propulsion	Electric brushless 250 W Pusher prop
	Battery	Lithium-polymer 11.1 V, 8000 mAh
	Payload	Calibrated 10 MP digital camera
	Autopilot	Automatic take-off & landing Waypoint navigation Autonomous camera triggering Fail-safe routines



 **Gatewing X100**
REVOLUTIONARY MAPPING

Take off & landing	Take off type	Catapult launch
	Take off speed	55 km/h
	Climb angle	15 degrees
	Landing type	Belly landing
	Landing speed	50 km/h
	Landing angle	6.5 degrees
	Advised landing strip	100 x 30 m
Communication	Communication & control link	2.4 GHz (default), 900 MHz (optional)
	Communication & control range	Up to 5 km (2.4 GHz) Up to 20 km (900 MHz)



BENEFITS - USP

- Easy and fast deployment of UAS
- Digital and automated image processing
- End products ready for GIS or CAD importing
- Highly accurate mapping of areas up to 20 km²
- Multitemporal site coverage through frequent scanning
- Make your own images whenever and wherever you need to!
- Rugged ground control station with visual flight planning software



GATEWING X100 KIT



- Complete X100 UAV with eBox
- Launcher
- Spare body
- Ground control station
- Modem (2.4 GHz or 900 MHz)
- Calibrated digital camera
- Battery charger
- 2 high performance lithium polymer batteries
- Wind sleeve
- Spare parts & accessories

INTERESTED?

Price available upon request:

1300 867 266 • 1300 TOPCON
 info@positionpartners.com.au
 www.positionpartners.com.au
 NSW • VIC • QLD • SA • WA • TAS • NT



Shaping New Dimensions



WWW.GATEWING.COM