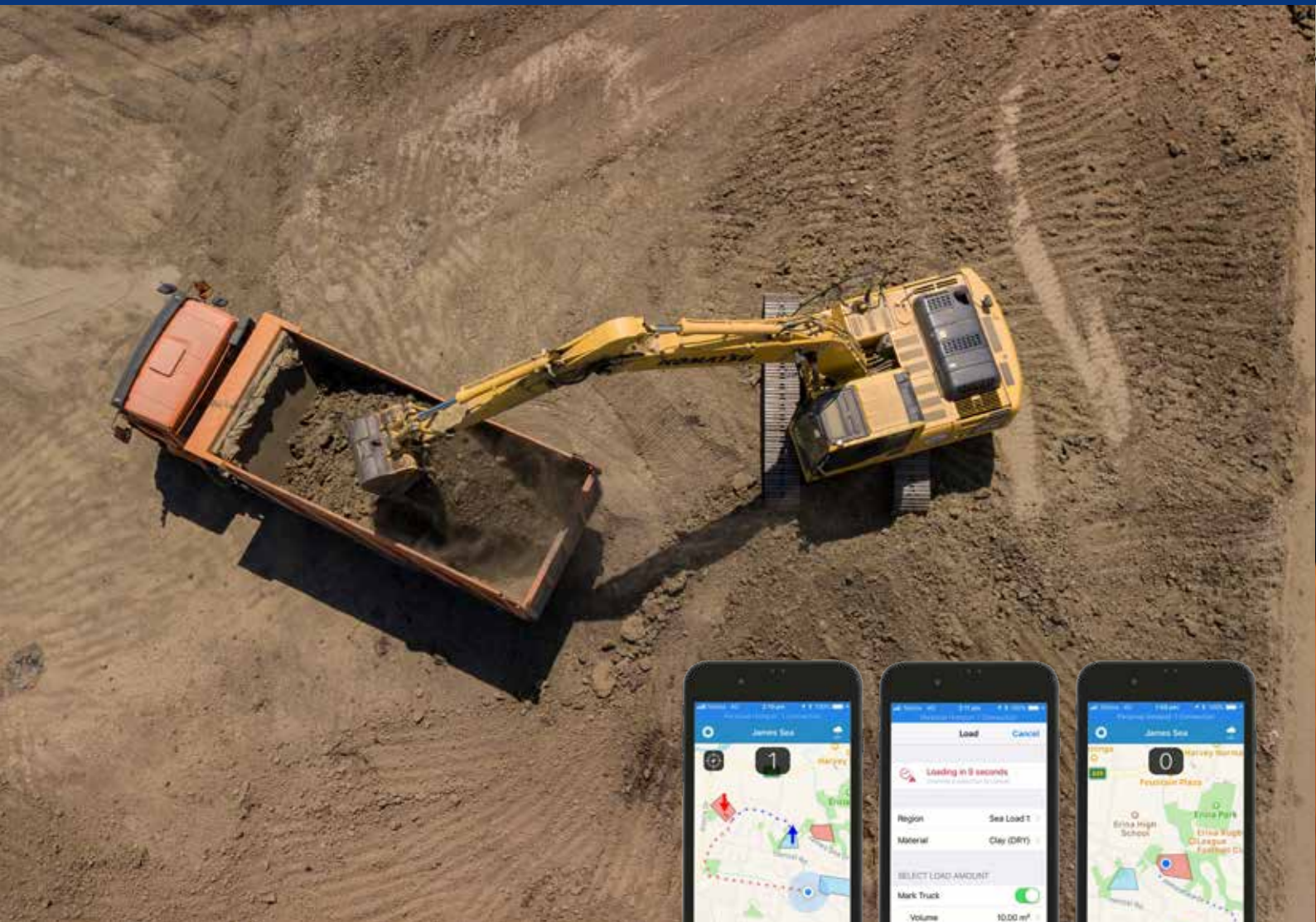




Haul Management Solutions

Position
Partners

Shaping New Dimensions



TOPCON



Topcon Haul App

Hardware-free digital records of load and dump cycles to increase productivity, save time and save money.

- **Cost effective:** no hardware required, drivers simply download the Topcon Haul app on their iPhone or Android device
- **Accurate records:** app tracks hauls, load and dump metrics
- **Time savings:** App automatically finds nearby sites and records delays to improve routing

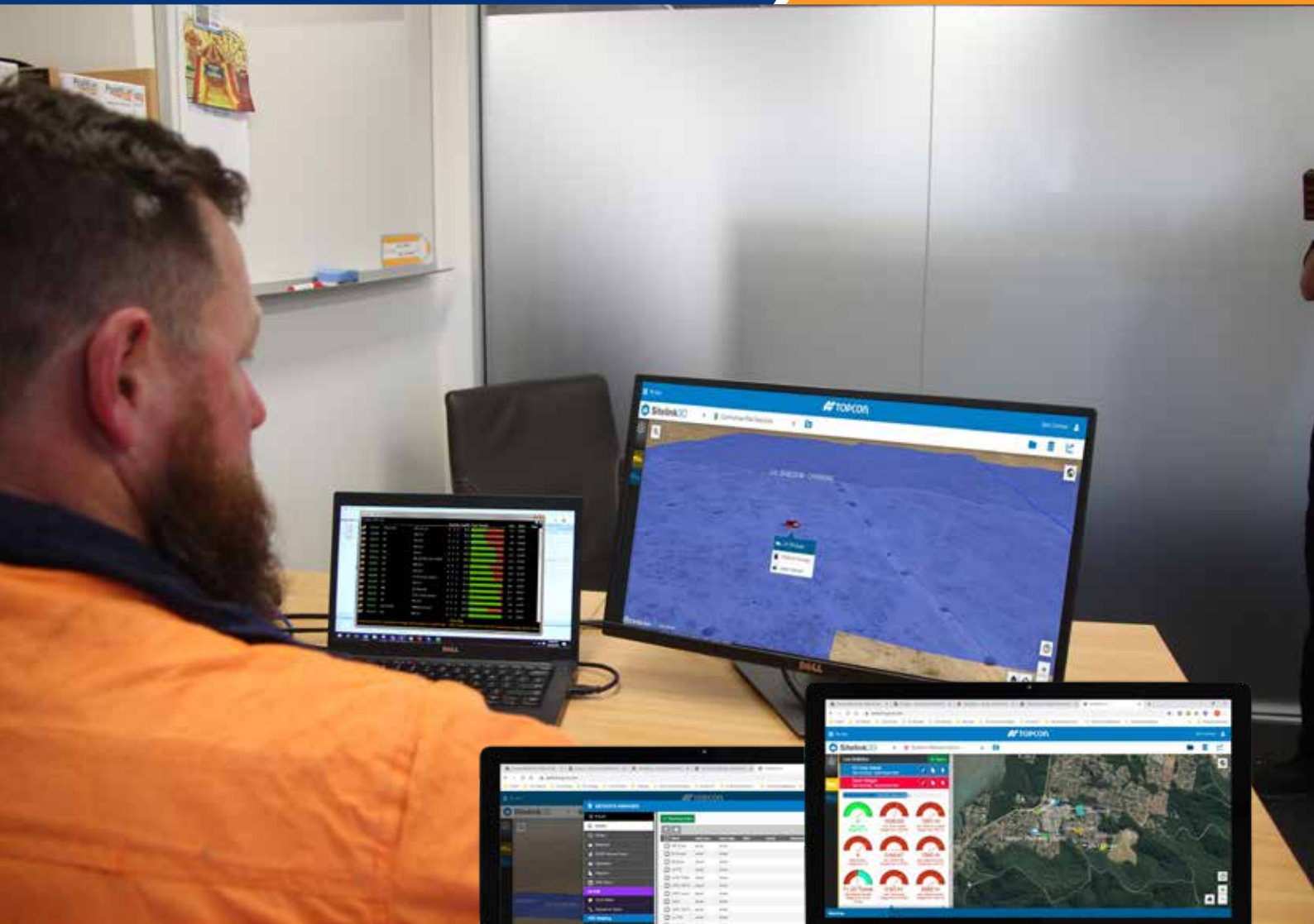


Digital Loading Records

- Automatic records when loaded by loader or excavator with on-board scales
- Automatic records when stopped in designated load area
- Easy manual entries available by tapping the load icon
- Excavators and loaders without on-board scales can use the Haul App to assign weights to trucks they fill

Digital Dumping Records

- Automatic records by stopping in a designated dump area
- Easy manual entries by tapping the dump icon

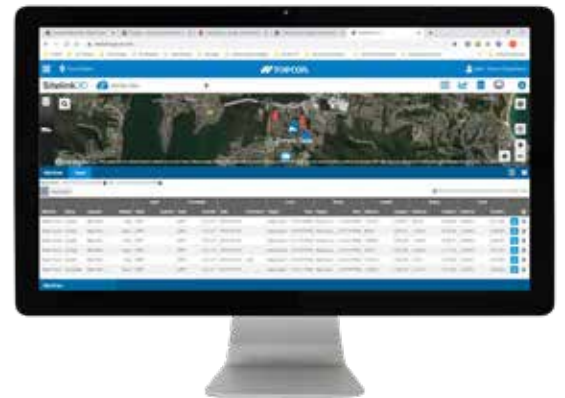


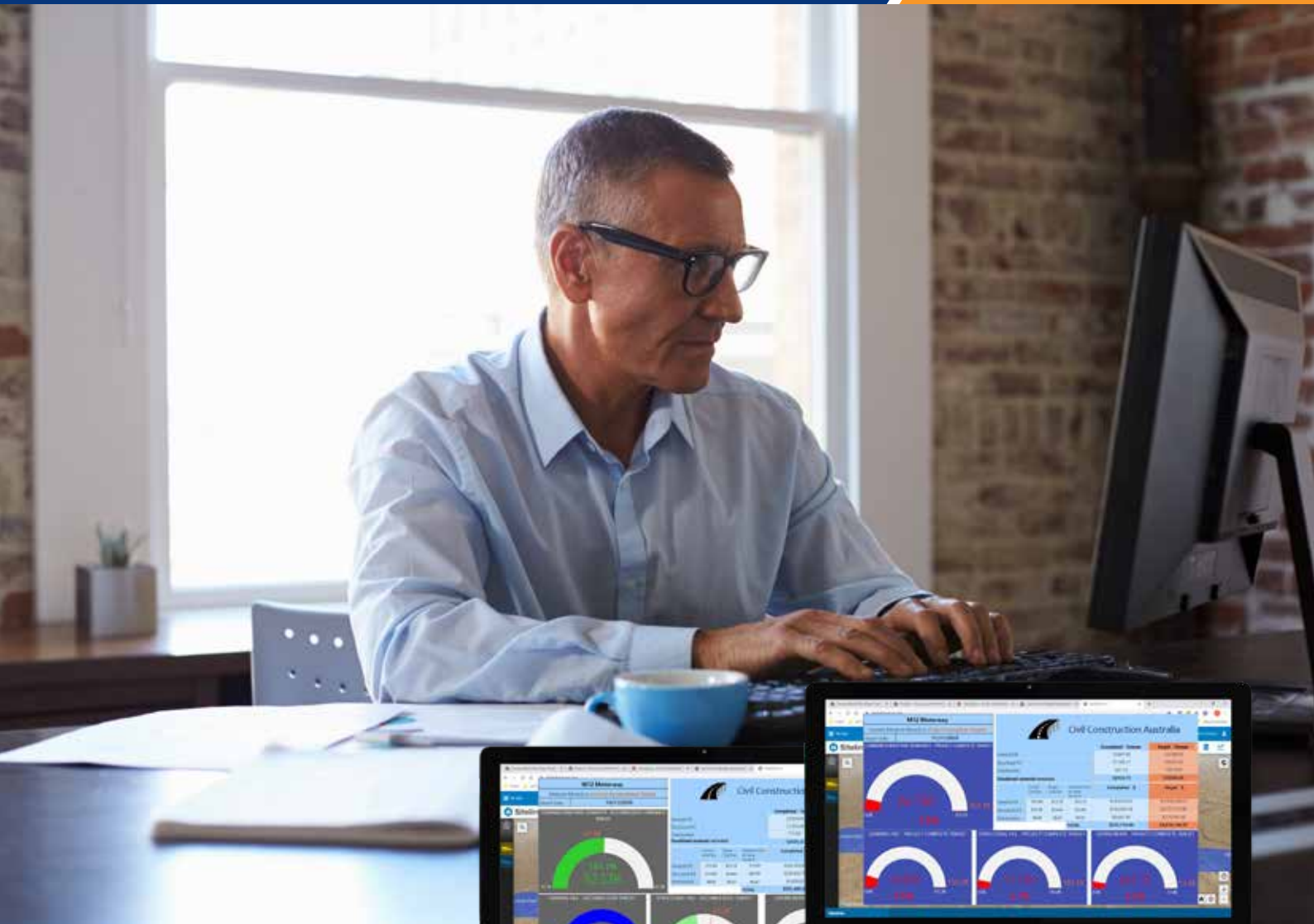
Sitelink3D

Topcon SiteLink 3D V2

An easy to use, cloud-based platform to manage all your assets and data, visualisation and reporting

- **Increase productivity with live performance metrics:** event-driven, real-time performance tracking on haul cycles with live statistics widgets
- **Efficiently manage multiple jobs:** create and manage multiple sites and projects, with defined user roles and access levels, as well as file and metadata management
- **Keep an eye on progress:** overlay design files, alignments and drone imagery to visualise the project in 2D or 3D. Track all connected machines
- **Customise to suit your project needs:** create regions, materials, activities, delays, shift plans, operator and asset lists. Also supports material bulking factors and states
- **Integrates to your workflow:** supports import/export to multiple industry-standard formats





Position Partners Report Portal

Critical metrics at a glance with our customisable reporting dashboard

- **Fully customisable** for your project requirements
- **Simple visualisation** on an easy to read dashboard showing daily productivity versus targets by material type, with custom mapping to filter by time, material, operator, tonnes and regions
- **Tonnages & Costs Gauges**
- **Actuals vs Targets at current time**
- **Actuals vs Project-Complete Targets**
- **Secure & 24/7**

Get in touch today:

1300 867 266

info@positionpartners.com.au

www.positionpartners.com.au

Australia • New Zealand • SE Asia



Position
Partners

Shaping New Dimensions